



Design NO. (SKU)	Color	Lehenga Fabric	Choli Fabric	Koti Fabric	Size (Semi-Stitched)	Choli Work	Lehenga Work	Koti Work	Choli Length	Koti Length
1321	Green	Chinon	Chinon	Chinon	UPTO 42 BUST & WAIST	Thread with sequence Embroidered	Thread with sequence Embroidered	Zari with sequence embroidered	0.65 MTR	3 MTR FABRIC
1322	White - Navy	Pure Cotton	Pure Cotton	Pure Cotton	UPTO 42 BUST & WAIST	Thread with sequence Embroidered	Thread with sequence Embroidered	Thread with sequence Embroidered	0.80 MTR	1.5 MTR FABRIC
1323	White - Maroon	Chinon	Chinon	Chinon	UPTO 42 BUST & WAIST	Thread with sequence Embroidered	Thread with sequence Embroidered	Zari with sequence embroidered	0.80 MTR	48 INCH (Semi Stitched)
1324	Peach - Black	Net	Net	Velvet	UPTO 42 BUST & WAIST	Velvet Flower Pasting All Over	Velvet Flower Pasting All Over	Heavy Sequence Embroidered	0.80 MTR	1 MTR FABRIC
1325	Dusty Pink - Purple	Net	Net	Chinon	UPTO 42 BUST & WAIST	Sequence Embroidered	Sequence Embroidered	Thread with sequence Embroidered	0.80 MTR	3 MTR FABRIC

THIS BOOK / CATALOGUE / LOGO / ARE PROTECTED UNDER COPYRIGHT ACT.

AN ILLEGAL/UNAUTHORIZED REPRINT, PUBLISHING, REPRODUCTION, DISTRIBUTION AND MODIFICATION OF ANY IMAGES, PHOTOGRAPHS AND PRODUCTS, TOTALLY OR IN PART, FOR ANY PURPOSE, REASON OR CAUSE IS STRICTLY PROHIBITED AND PUNISHABLE UNDER LAW.

Abhkala®

Bridesmaid  
Vol. 7



1321



1322



1323



1324



1325

शुभकला



1323



Abhikala

1322

bhkala®



1322





1321



 bhkala

1321



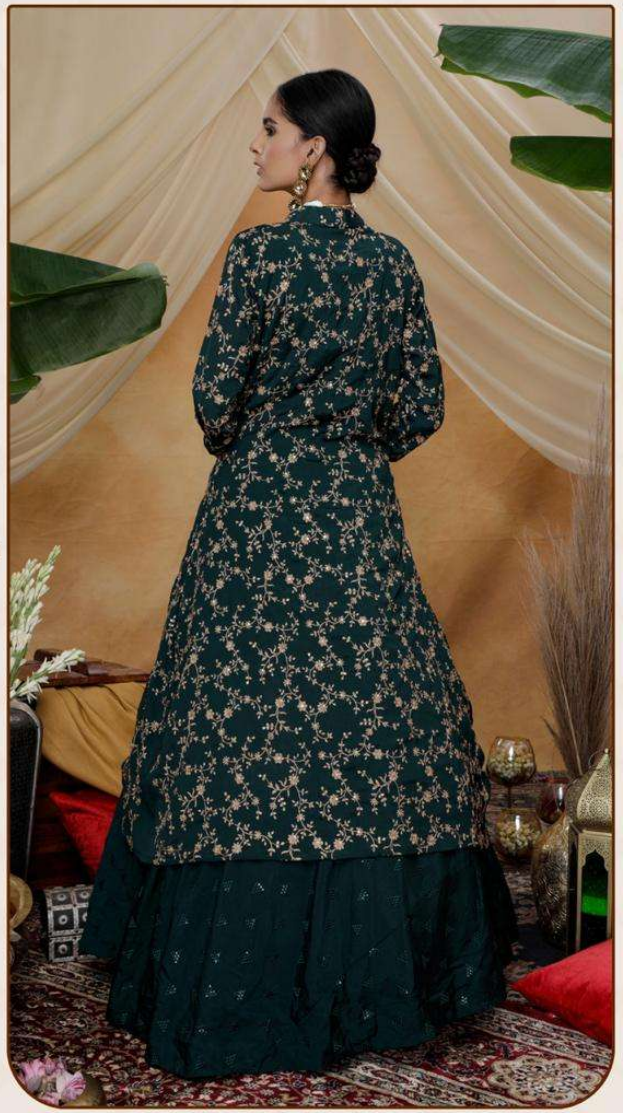
शुभकला bhkala





Ubhkala

1321





1325



bhkala

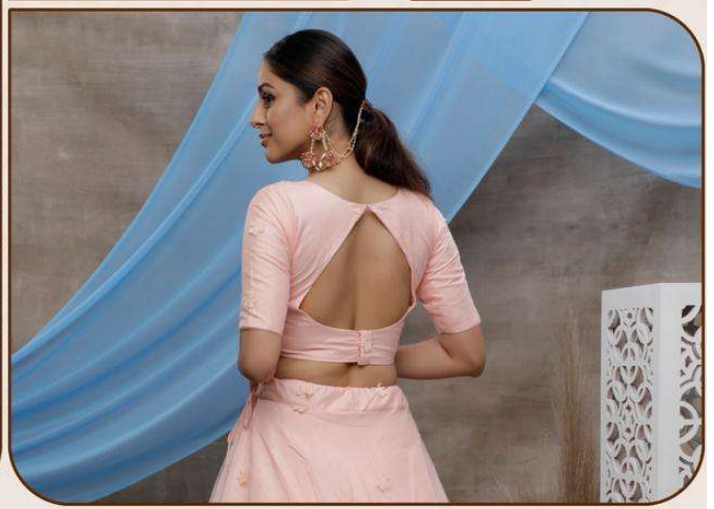


1325

ॐ bhkala



1324





Abhkala

1323