

# *Dulhaniya*

18<sup>®</sup>  
ATTITUDE

WEAR YOUR ATTITUDE





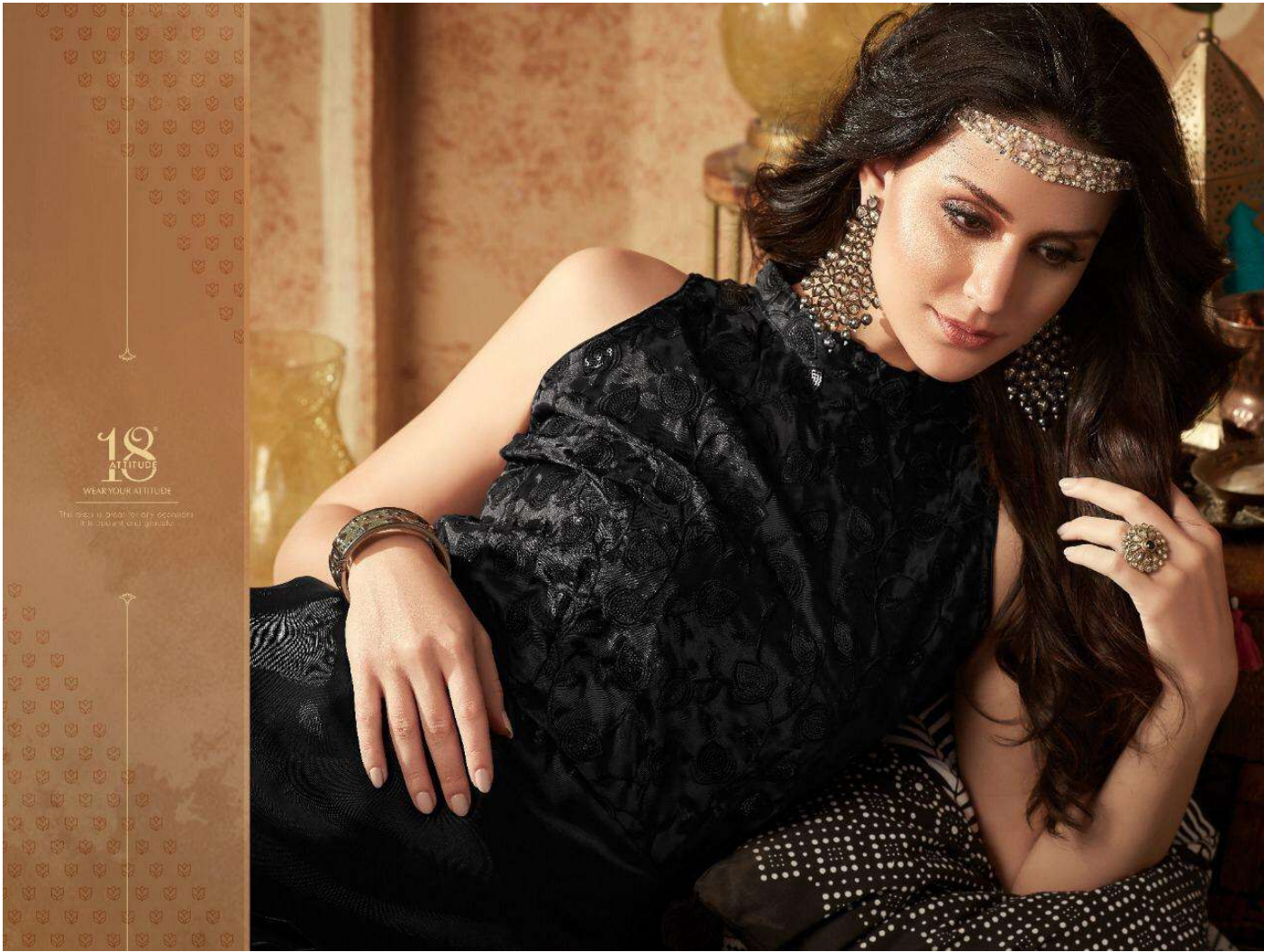
Portrait of a woman in a light blue, sleeveless, beaded dress.

1001



18  
ATTITUDE

WEAR YOUR ATTITUDE



18  
ATTITUDE

WEAR YOUR ATTITUDE

This dress is great for any occasion.  
It is elegant and girly.





18  
ATTITUDE  
WEAR YOUR ATTITUDE

Our best designers have worked to create this masterpiece

1005







18  
ATTITUDE

WEAR YOUR ATTITUDE

A sophisticated dress with intricate work and design,  
that glows in glorious.





A pathe chait khaton payal rish devat

1004





18  
ATTITUDE

WEAR YOUR ATTITUDE

It's not just the dress, it's the way you wear it.  
Make it yours. Make it yours.

1006



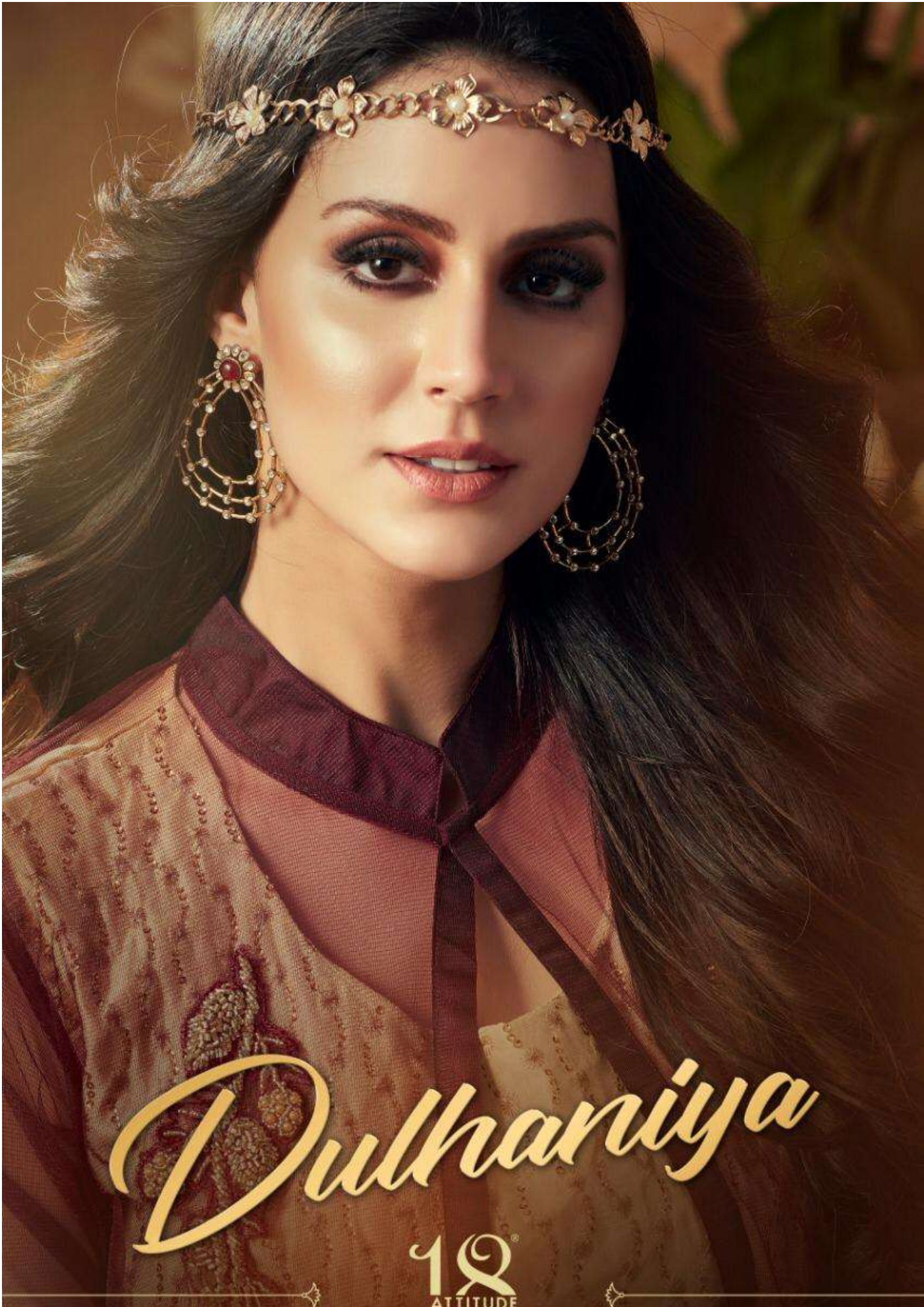


18  
ATTITUDE  
WEAR YOUR ATTITUDE

The look of the dress is enchanting and fashion to wear.

1002





# Dulhaniya

18<sup>®</sup>  
ATTITUDE

WEAR YOUR ATTITUDE