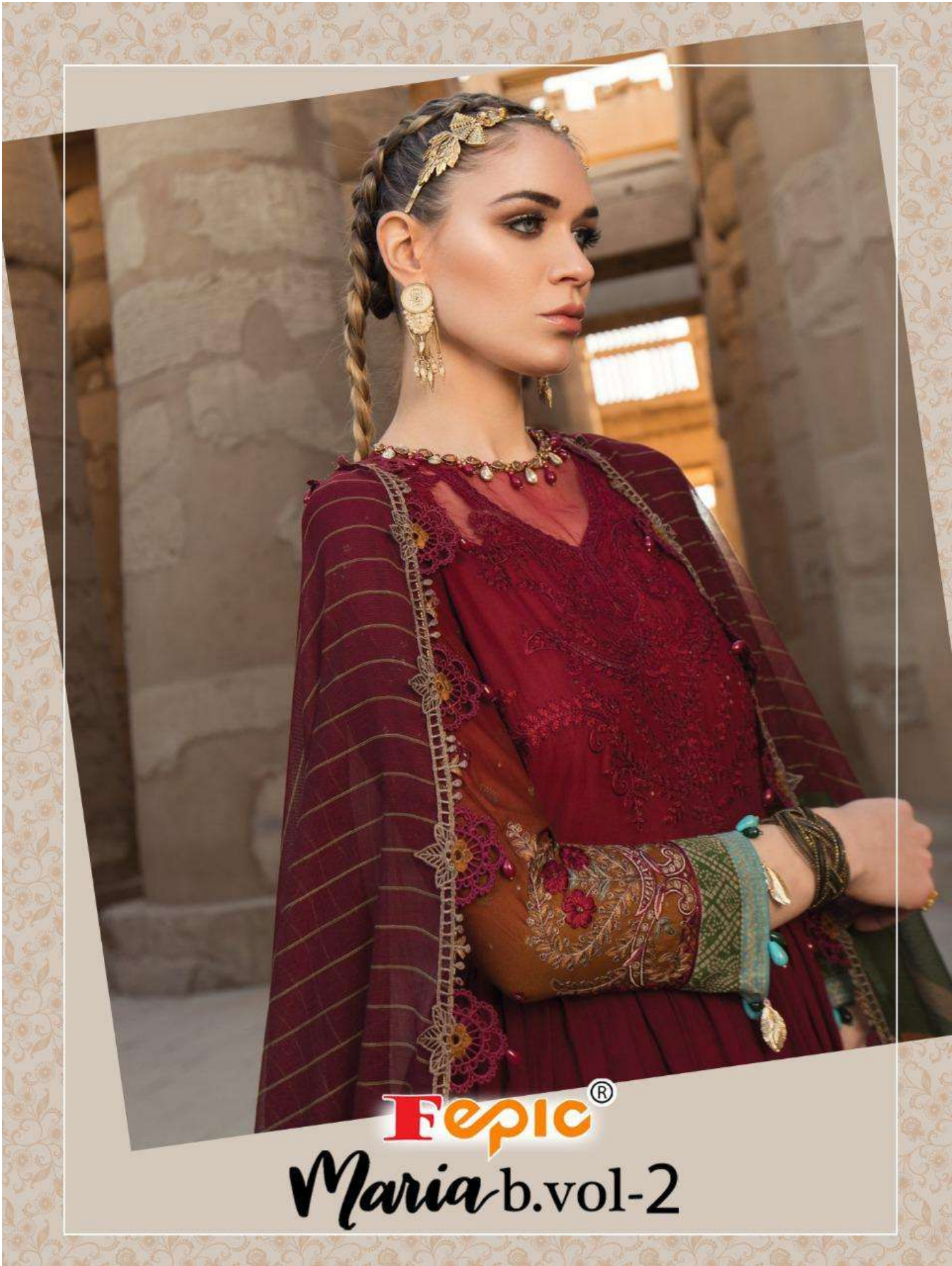


Epic[®]

Maria b.vol-2





FEPIC®
Maria b.vol-2

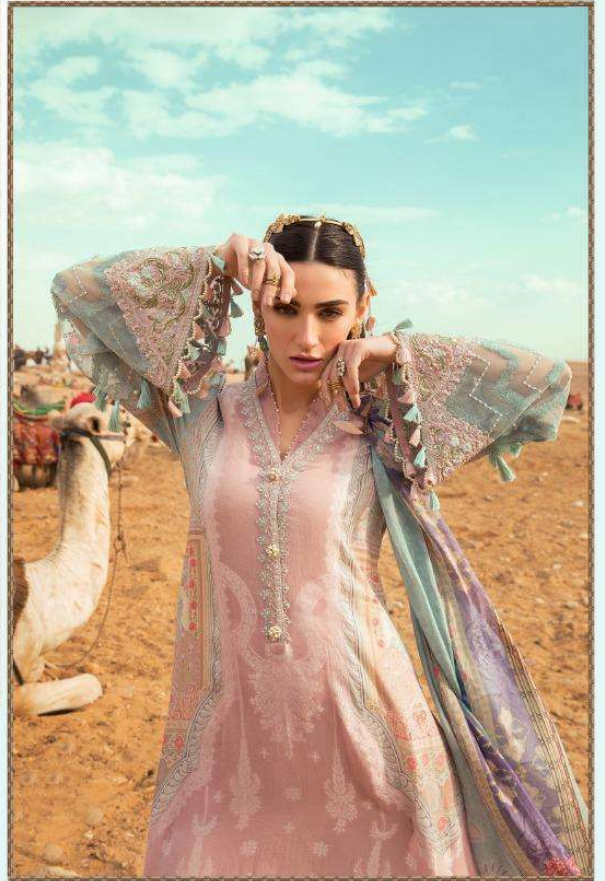


Fepic®

Maria.b.vol-2

Instagram: [Fepic](#) Facebook: [Fb.com/Fepic11](#)





Fepic[®]

Maria.b.vol-2

 :_Fepic  :fb.com/Fepic11





WASHING INSTRUCTIONS

DO NOT USE ANY TYPE OF BLEACH OR STAIN REMOVING CHEMICALS
 BEFORE CUTTING / STITCHING , FABRIC SHOULD BE SOAKED BE SOAKED IN WATER
 (ALL COMPONENTS SEPARATELY) FOR 15 MINUTES
 DO NOT KEEP WET FABRIC IN TWISTED FROM IN ORDER TO AVOID COPY MARKS |
 WASH COLOURED AND WHITE FABRICS SEPARATELY
 IRON CLOTHES AT MODERATE TEMPERATURE | DO NOT DRY FABRIC IN DIRECT SUNLIGHT
 (EXTRA LACES, HANGINGS AND ACCESSORIES ARE NOT INDUDED)

ROSEMEEN
Maria b.vol-2

D.NO.2112



Fepic®



WASHING INSTRUCTIONS

DO NOT USE ANY TYPE OF BLEACH OR STAIN REMOVING CHEMICALS
BEFORE CUTTING / STITCHING , FABRIC SHOULD BE SOAKED IN WATER
(ALL COMPONENTS SEPARATELY) FOR 15 MINUTES
DO NOT KEEP WET FABRIC IN TWISTED FROM IN ORDER TO AVOID COPY MARKS |
WASH COLOURED AND WHITE FABRICS SEPARATELY
IRON CLOTHES AT MODERATE TEMPERATURE | DO NOT DRY FABRIC IN DIRECT SUNLIGHT
(EXTRA LACES, HANGINGS AND ACCESSORIES ARE NOT INLUDED)

ROSEMEEN
Maria b.vol-2

D.NO.2113



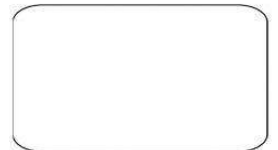


WASHING INSTRUCTIONS

DO NOT USE ANY TYPE OF BLEACH OR STAIN REMOVING CHEMICALS
BEFORE CUTTING / STITCHING , FABRIC SHOULD BE SOAKED IN WATER
(ALL COMPONENTS SEPARATELY) FOR 15 MINUTES
DO NOT KEEP WET FABRIC IN TWISTED FROM IN ORDER TO AVOID COPY MARKS |
WASH COLOURED AND WHITE FABRICS SEPARATELY
IRON CLOTHES AT MODERATE TEMPERATURE | DO NOT DRY FABRIC IN DIRECT SUNLIGHT
(EXTRA LACES, HANGINGS AND ACCESSORIES ARE NOT INLUDED)

ROSEMEEN
Maria b.vol-2

D.NO.2114





Epic®

WASHING INSTRUCTIONS
 DO NOT USE ANY TYPE OF BLEACH OR STAIN REMOVING CHEMICALS
 BEFORE CUTTING / STITCHING , FABRIC SHOULD BE SOAKED IN WATER
 (ALL COMPONENTS SEPARATELY) FOR 15 MINUTES
 DO NOT KEEP WET FABRIC IN TWISTED FROM IN ORDER TO AVOID COPY MARKS |
 WASH COLOURED AND WHITE FABRICS SEPARATELY
 IRON CLOTHES AT MODERATE TEMPERATURE | DO NOT DRY FABRIC IN DIRECT SUNLIGHT
 (EXTRA LACES, HANGINGS AND ACCESSORIES ARE NOT INLUDED)

ROSEMEEN
Maria b.vol-2

D.NO.2115





WASHING INSTRUCTIONS

DO NOT USE ANY TYPE OF BLEACH OR STAIN REMOVING CHEMICALS
BEFORE CUTTING / STITCHING , FABRIC SHOULD BE SOAKED IN WATER
(ALL COMPONENTS SEPARATELY) FOR 15 MINUTES
DO NOT KEEP WET FABRIC IN TWISTED FROM IN ORDER TO AVOID COPY MARKS |
WASH COLOURED AND WHITE FABRICS SEPARATELY
IRON CLOTHES AT MODERATE TEMPERATURE | DO NOT DRY FABRIC IN DIRECT SUNLIGHT
(EXTRA LACES, HANGINGS AND ACCESSORIES ARE NOT INLUDED)

ROSEMEEN
Maria b.vol-2

D.NO.2111





D.NO.2111



D.NO.2112



D.NO.2113




D.NO.2114



D.NO.2115

Fepic® **ROSEMEEN**
Maria b.vol-2

 :_Fepic

 :Fb.com/Fepic11


D.NO	TOP	BOTTOM	DUPATTA	RATE
2111	HEAVY RAYON PRINTED WITH EMBROIDERD PATCHES	SEMILAWN	CHIFFON PRINTEED	871
2112	PURE COTTON PRINTED WITH EMBROIDERD PATCHES	SEMILAWN	CHIFFON PRINTEED	715
2113	PURE COTTON PRINTED WITH EMBROIDERD PATCHES	SEMILAWN WITH EMBROIDERD PATCHES	CHIFFON PRINTEED	791
2114	PURE COTTON FRONT SHIFLY EMBROIDERED & BACK PRINTED COTTON WITH EMBROIDERED BUNCHES	SEMILAWN PRINTED	CHIFFON PRINTEED	813
2115	PURE COTTON FRONT SHIFLY EMBROIDERED & BACK PRINTED COTTON WITH EMBROIDERED BUNCHES	SEMILAWN PRINTED	CHIFFON PRINTEED	813

AVG RATE-799

Fepic®

ROSEMEEN
Maria b.vol-2

 :_Fepic

 :Fb.com/Fepic11