

Sanna  
FASHION

KHAANI

A woman with long, wavy brown hair is looking directly at the camera. She is wearing a vibrant, multi-colored (pink, purple, green, and blue) outfit with intricate white floral embroidery. She is also wearing large, ornate silver earrings. She is holding a large, light-brown woven hat over her head, with her hands visible near the brim. The background is dark and out of focus.

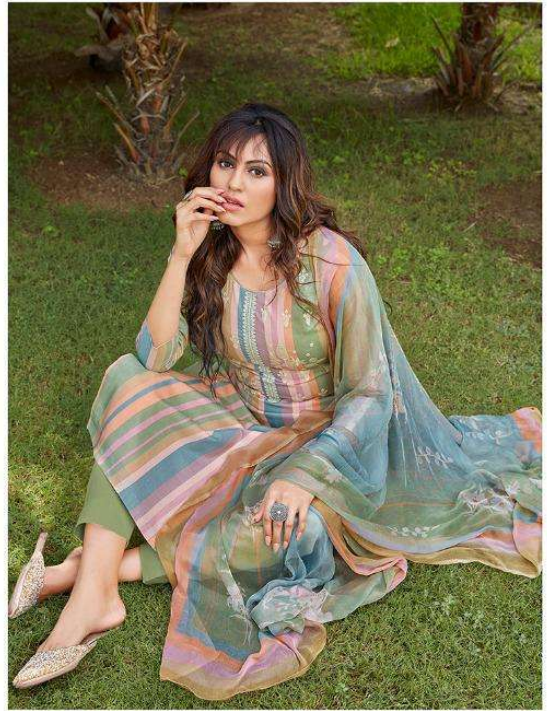
Sanna  
FASHION

KHAANI



Soma  
FASHION

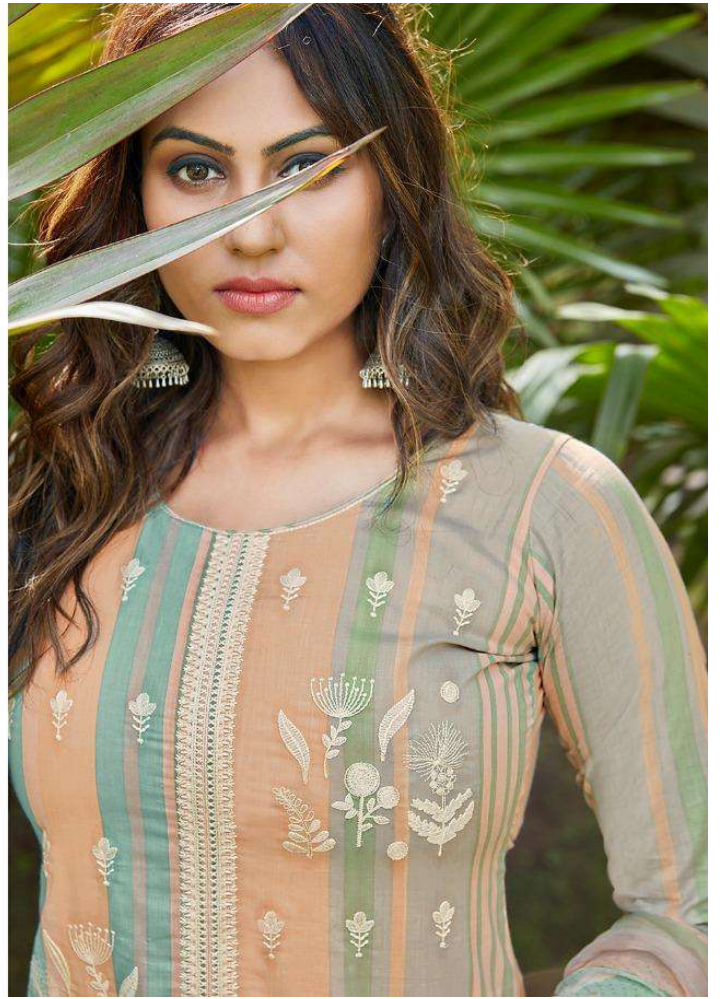




Sanna  
FASHION















Sanna  
FASHION







Sama  
FASHION





3811

3812

3813



3816

3817

3818



3814

3815



3819

3820

Sanna  
FASHION  
**KHAANI**