

A woman with dark hair pulled back, wearing large ornate earrings and a ring, is seated and looking towards the camera. She is wearing a long-sleeved, knee-length red dress with intricate white floral and geometric embroidery. The dress features a V-neckline with a buttoned placket, a gathered waist, and a wide, decorative border along the hem and sleeves. The background is a plain, light-colored wall.

VAMIKA
THE FASHION STUDIO

LAKHNAVI
VOL.6-HIT LIST

A woman with dark hair pulled back, wearing a red long-sleeved dress with intricate white floral embroidery. She is wearing large, ornate silver earrings and a ring. The background is a plain, light-colored wall.

VAMIKA
THE FASHION STUDIO

LAKHNAVI
VOL.6-HIT LIST



1031-0



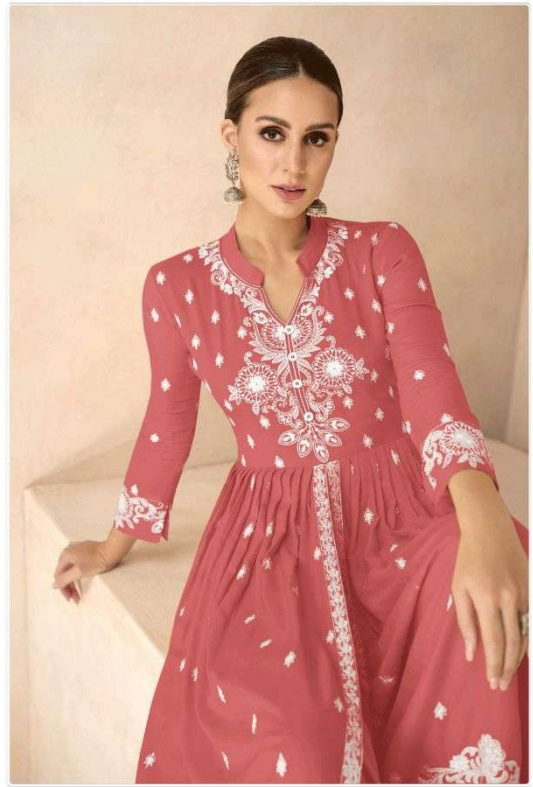


1031-K





VAMIKA
THE FASHION STUDIO



1031-N



1031-M





VAMIKA
THE FASHION STUDIO



1031-L



1031-K



1031-L



1031-O



1031-M



1031-N

VAMIKA
THE FASHION STUDIO
LAKHNAVI
VOL.6-HIT LIST